

# Model TQ7 Axial Torsion Force Transducer

- Measures force and torque
- Tension & compression – CW & CCW Torque
- Less than 5% crosstalk
- Excellent thermal compensation

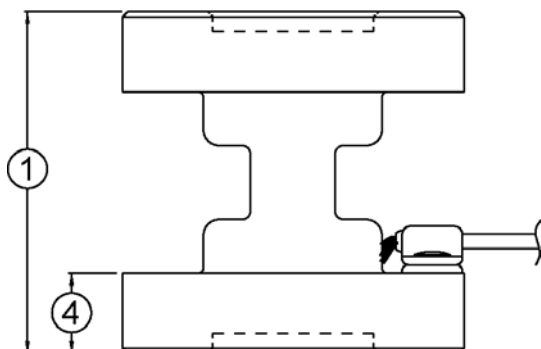
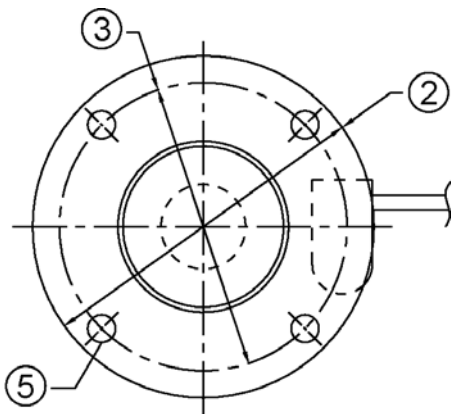


## OPTIONS

Pigtail with connector

## DIMENSIONS

See Drawing	CAPACITY
	lbf / inch-lb
	1K / 20 to 2.5K / 50
(1)	2.12
(2)	2.12
(3)	1.791
(4)	0.50
(5)	8x $\Phi$ 0.173



## SPECIFICATIONS

ACCURACY – (MAX ERROR)	Axial Bridge A	Torsion Bridge B
Nonlinearity-% FS	$\pm 0.25$	$\pm 0.25$
Hysteresis-% FS	$\pm 0.25$	$\pm 0.25$
Nonrepeatability-% RO	$\pm 0.02$	$\pm 0.05$
Creep, in 20 min-%	$\pm 0.025$	$\pm 0.05$
TEMPERATURE		
Compensated Range-°F	15 to 115	15 to 115
Compensated Range-°C	-10 to 45	-10 to 45
Operating Range-°F	-65 to 200	-65 to 200
Operating Range-°C	-55 to 90	-55 to 90
Effect on Output-%/100F°-MAX	$\pm 0.08$	$\pm 0.15$
Effect on Zero-% RO/100F°-MAX	$\pm 0.15$	$\pm 0.30$
ELECTRICAL		
Rated Output-mV/V (Nominal)	2.0	2.0
Zero Balance-% RO	$\pm 2.0$	$\pm 2.0$
Input Resistance-Ohms	700 $\pm$ 7	700 $\pm$ 7
Output Resistance-Ohms	700 $\pm$ 7	700 $\pm$ 7
Excitation Voltage-MAX	20 VDC	20 VDC
MECHANICAL		
Calibration	T & C	CW & CCW
Safe Overload-% CAP	$\pm 150$	$\pm 150$

TQ7 UK V1.0  
03.10.12