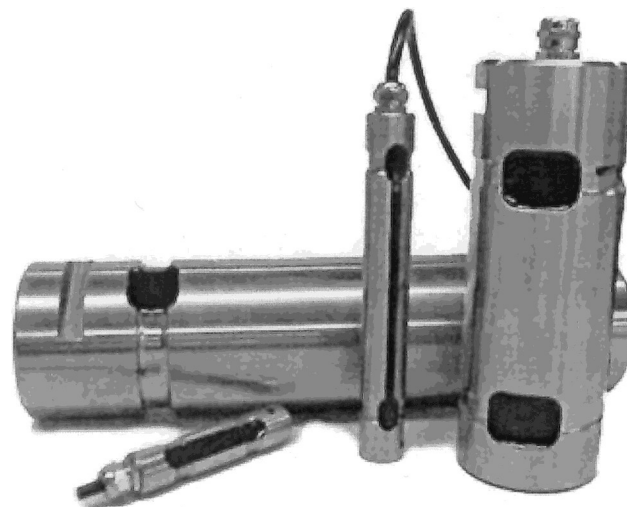


Model ELDP Load Pin

- U.K. Designed and Manufactured
- Capacities from 100Kg to 1000 Tonne
- Environmental Protection Rating to IP67
- Full Stainless Steel Construction
- Custom Made to Your Dimensions



Rated Load	100kg to 1000T
Rated Output	1 to 1.5mV/V
Excitation	10Vdc
Ultimate Load	300% of capacity
Combined Error	<±0.1%FS
Repeatability	<±0.1%FS
Creep, 20mins@ rated load	<0.5%
Output at zero load	<±2%FS
Input Resistance	375Ω
Output Resistance	350Ω
Operational Temp. Range	-20 to +70 deg. C
Compensated Temp Range	-10 to +50 deg. C
Temp coeff. of Zero	<±0.02% / deg. C
Temp coeff. of span	<0.02% / deg. C
Environmental Protection	IP67

Std. Configuration:- 5m screened 4 core cable with polyurethane jacket. Wiring Code;

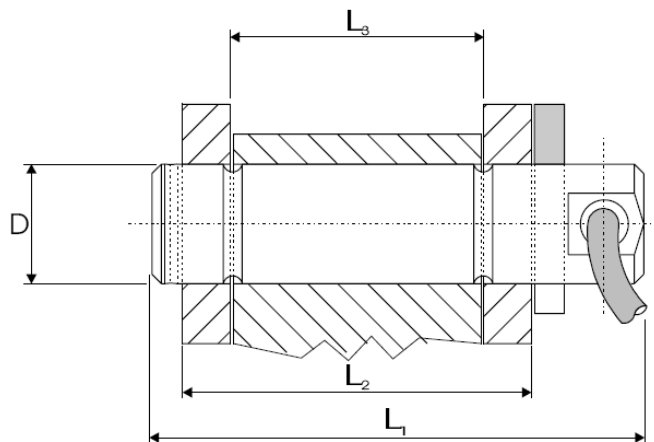
Red—positive excitation, Blue—negative excitation,

Green—positive signal, Yellow—negative signal

The ELDP load pin can be used as part of new designs or can be custom built to replace existing pins in clevis or pulley assemblies to add load monitoring or measurement capability

For maximum flexibility in retrofit applications the design can be adapted to replicate simple shaft designs or replace existing bolts. Cable exits can be either axial or radial and the slot for a keeper or retaining plate can be located to suite your specific application.

Units with dual independent bridges can be supplied with connections through a single, multi-way connector. This optional feature is useful for any application where a second output is required for an additional monitoring channel.



Whatever your application, all we need is the basic dimensions as per the drawing above and the required load capacity in order to provide a quotation