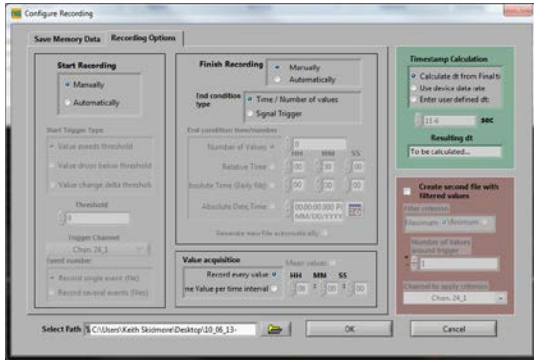


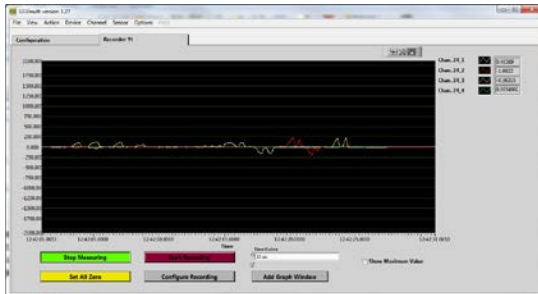


BSC8 Multi-Channel Amplifier

- 8-Channel
- 200K Samples/Sec
- 16-bit Resolution
- USB Connection to PC
- Includes Graphing & Logging Software
- Automatic Load & Torque Calculations Using 36-Term Coefficient Matrix
- NI LabView Compatible
- Tare via Button or Software
- $\pm 5V$ Analog Outputs of Raw Data



Software Screen Shots



Specifications

Input Range - mV/V	2 (Optional 3.5)
Resolution	16 Bit
Sample Rate	200 kHz
Analog Filter	2.5K Hz (250 Hz or 10K Hz Optional)
Excitation Voltage	5V
Supply Voltage	11VDC - 25VDC
Supply Current	300 mA
Operating Temperature - $^{\circ}C$	-10 to 65
Storage Temperature - $^{\circ}C$	-20 to 65
Temperature Effect on Zero - $\%/10^{\circ}C$	<0.05
Temperature Effect on Sensitivity - $\%/10^{\circ}C$	<0.01
Length	75 mm
Width	38 mm
Height	45 mm
Protection	40 ip



16-Channel System

Wiring Information for 6A Series 6-Axis Sensors.

	Function	Single Cable	Dual Cable	Pin		Function	Single Cable	Dual Cable	Pin
CH1	+ Excitation	Red	Red	1	CH4	+ Excitation	Green - Black	Green	13
	- Excitation	Black	Black	2		- Excitation	Black-white	Black	14
	+ Output	Green	Green	3		+ Output	Red-Black	Red	15
	- Output	White	White	4		- Output	White-Black	White	16
	Function	Single Cable	Dual Cable	Pin		Function	Single Cable	Dual Cable	Pin
CH2	+ Excitation	Blue	Blue	5	CH5	+ Excitation	Purple - Black	Purple	17
	- Excitation	Yellow	Yellow	6		- Excitation	Yellow-Black	Yellow	18
	+ Output	Violet	Violet	7		+ Output	Blue - Black	Blue	19
	- Output	Gray	Gray	8		- Output	Gray-Black	Gray	20
	Function	Single Cable	Dual Cable	Pin		Function	Single Cable	Dual Cable	Pin
CH3	+ Excitation	Orange	Orange	9	CH6	+ Excitation	Pink - Black	Pink	21
	- Excitation	Brown	Brown	10		- Excitation	Brown - Black	Brown	22
	+ Output	Pink	Pink	11		+ Output	Orange-Black	Orange	23
	- Output	transparent	Transparent	12		- Output	Transparent -Black	Transparent	24