

Model 2100 High Capacity Column Load Cell (U.S. & Metric)



Why the Interface model 2100 High Capacity Column Load Cell is the best in class:

- Capacities to 1000Klbf or 4450 kN
- Performance to $\pm 0.15\%$ FS
- Compact size
- Metric and English models

OPTIONS

Compression-Only available. Ask factory for specifications and dimensions.

- Multiple Bridge
- Standardized Output
- ASTM E74 Calibration
- Special Thread Size
- Handles

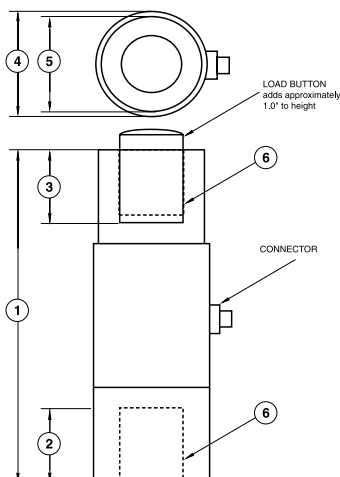
ACCESSORIES

- Mating Connector
- Cable Assembly

Consult factory for more technical information.

SPECIFICATIONS

PARAMETERS	Cal Grade
ACCURACY	
Nonlinearity - %FS	± 0.15
Hysteresis - %FS	± 0.05
Nonrepeatability - %RO	± 0.03
Creep in 20 min - %	± 0.05
TEMPERATURE	
Compensated Range-°F	32 to 132
Operating Range-°F	-30 to 200
Effect on Zero-%RO/°F	0.003
Effect on Output-%/°F	0.003
ELECTRICAL	
Rated Output - mV/V (Nominal)	2.0
Excitation - V AC/DC - Nominal	10
Excitation - V AC/DC - Maximum	15
Bridge Resistance-Ohm (Nominal)	350
Zero Balance - %RO	± 1.0
Insulation Resistance - Megohm	> 5000
MECHANICAL	
Safe Overload-%CAP	150
Connector	MS3102A-14S-5P



DIMENSIONS

See Drawing	MODEL 2160											
	CAPACITY (lbf/kN)											
	300K	1335 kN	400K	1780 kN	500K	2225 kN	600K	2670 kN	700K	3115 kN	1000K	4450 kN
	inch	mm	inch	mm	inch	mm	inch	mm	inch	mm	inch	mm
①	16.50	419.1	19.00	482.6	21.26	540.0	23.25	590.6	25.50	647.7	27.80	706.1
②	3.75	95.3	4.00	101.6	4.50	114.3	5.00	127.0	5.50	139.7	6.50	165.1
③	3.75	95.5	4.00	101.6	4.50	114.3	5.00	127.0	5.50	139.7	6.50	165.1
④	5.50	139.7	5.50	139.7	6.00	152.4	7.00	177.8	7.50	190.5	9.50	241.3
⑤	5.00	127.0	5.00	127.0	5.50	139.7	6.50	165.1	7.00	177.8	9.00	228.6
⑥	3 1/2-12	M76x2	3 1/2-12	M90x2	4-12	M100x2	4 1/2-8	M100x2	5-8	M125x4	6-8	M125x4