

Model TS19 Short Flange Style Reaction Torque Transducer

Why the Interface model TS19 Short Flange Style Reaction Torque Transducer is the best in class:

- Capacities from 100 to 5K Nm (885 to 44.3K lbf-in)
- Short, rugged, compact design
- Both ends with flange



TS19 Short Flange Style Reaction Torque Transducer

OPTIONS

100% Control Signal(RCAL)

PIN CONNECTIONS

7-Pin	Function
Pin-1	Excitation -
Pin-2	Excitation +
Pin-3	Shield
Pin-4	Signal +
Pin-5	Signal -
Pin-6	Control Signal (option)
Pin-7	NC

SPECIFICATIONS

ACCURACY – (MAX ERROR)

Combined Error-% FS±0.1
 Nonrepeatability-%±0.02

TEMPERATURE

Effect on Zero-% RO/°C±0.02
 Effect on Output-%/°C±0.01
 Rated Range-°C-5 to +45
 Operating Range-°C-15 to +55

ELECTRICAL

Output-mV/V1.5
 Excitation Voltage-VDC MAX12
 Bridge Resistance-Ohm350
 Electrical Connection7 pin LEMO
 ERA 1S 306 CLL

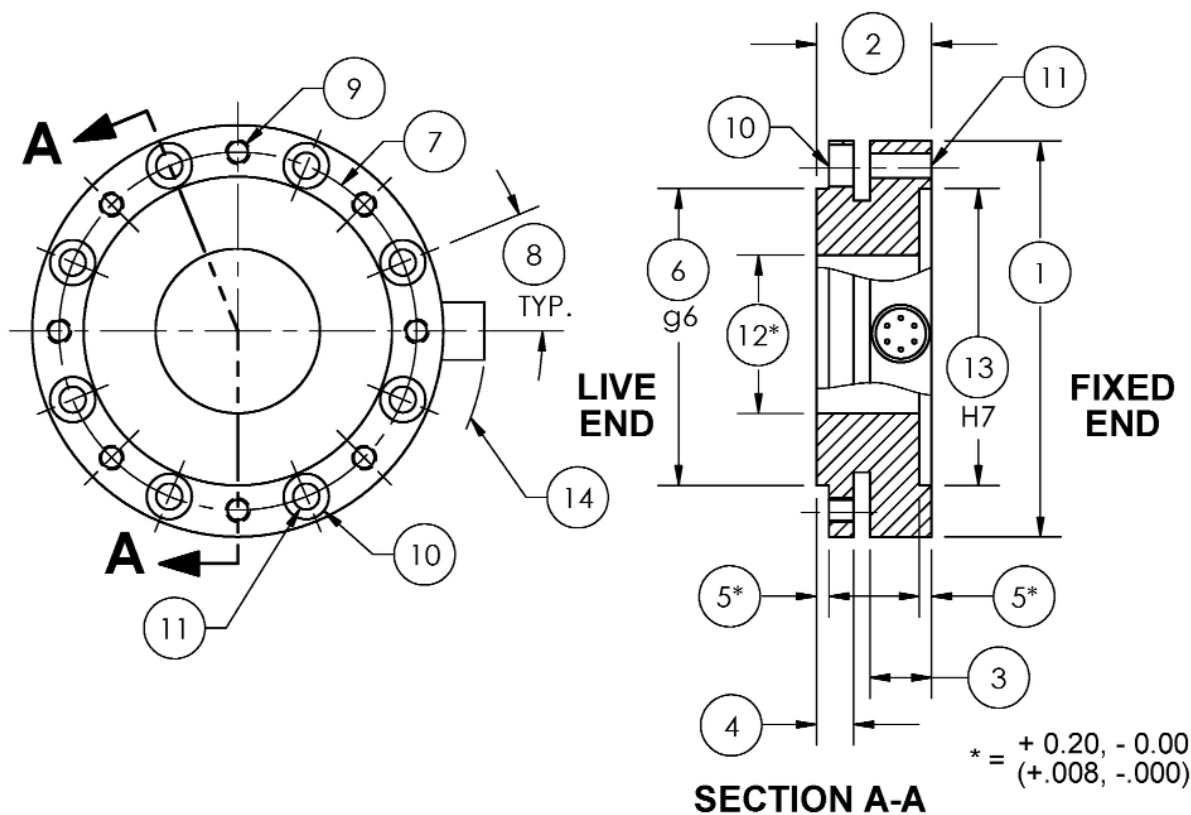
MECHANICAL

Safe Overload-% RO150
 Safe Overhung Moment-% FS50
 Cyclic Load Rating-% RO±70 peak
 MaterialStainless steel

Model TS19 Short Flange Style Reaction Torque Transducer-
Capacities 100 to 5K Nm

DIMENSIONS

Nominal Torque						
Capacity (Nm)	100		200, 500, 1K, 2K		5K	
Equivalent (lb-in)	885		1.77K, 4.43K, 8.85K, 17K		44.3K	
	inch	mm	inch	mm	inch	mm
①	3.94	100	6.14	156	9.37	238
②	1.10	28	1.71	43.5	2.64	67
③	0.61	15.5	0.81	20.5	1.12	28.5
④	0.41	10.5	0.83	21	1.44	36.5
⑤	0.12	3	0.12	3	0.12	3
⑥	2.9524/ 2.9516	75 g6	4.3302/ 4.3294	110 g6	6.8498/ 6.8489	174 g6
⑦	3.43	87	5.24	133	8.11	206
⑧	22.5°		22.5°		22.5°	
⑨	8xM6		8xM12		8xM18	
⑩	0.43	11	0.89	20	1.18	30
⑪	0.25	6.4	0.51	13	0.75	19
⑫	1.58	40.2	1.61	41	3.11	79
⑬	2.9539/ 2.9528	75 H7	4.3321/ 4.3307	110 H7	6.8520/ 6.8504	174 H7
⑭	0.39	10	0.39	10	0.39	10



TS19UK V2 2015_06_02